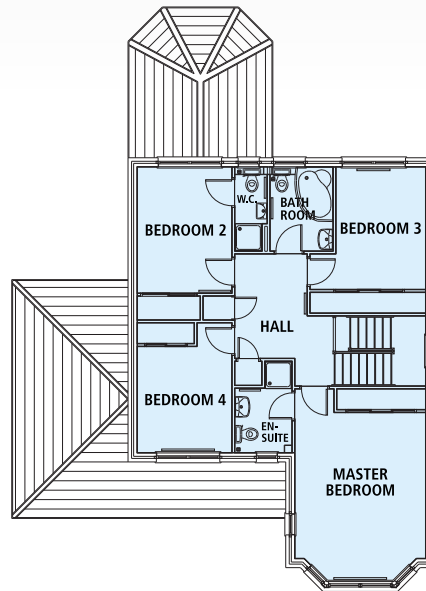
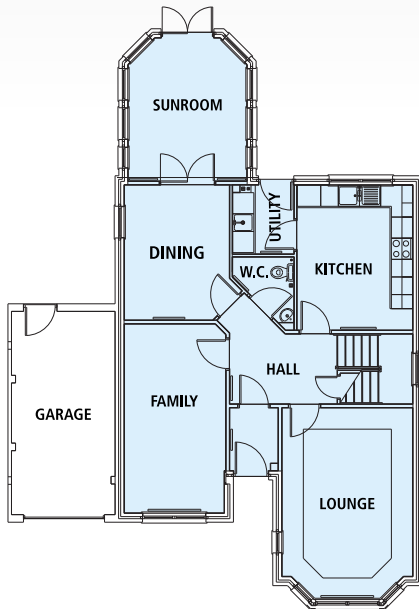




LOUDON FAMILY

FLOOR PLAN - Total Internal Area - 176m² 1894ft²



Lounge	3.7m x 4.8m	(12ft 1ins x 15ft 8ins)
Dining	3m x 3.5m	(9ft 10ins x 11ft 5ins)
Kitchen	3.5m x 3.1m	(11ft 5ins x 10ft 2ins)
Utility	1.5m x 2m	(4ft 11ins x 6ft 6ins)
Family Room	5.75m x 2.9m	(18ft 7ins x 9ft 6ins)
Sunroom	4.1m x 3.4m	(13ft 1ins x 11ft 1ins)

Master Bedroom	4.35m x 4.1m	(14ft 2ins x 13ft 5ins)
Bedroom 2	2.7m x 3.5m	(8ft 10ins x 11ft 5ins)
Bedroom 3	2.7m x 3.7m	(8ft 10ins x 12ft 1ins)
Bedroom 4	2.7m x 3.7m	(8ft 10ins x 12ft 1ins)

Although every care has been taken in the preparation of these details, some variance may occur.

