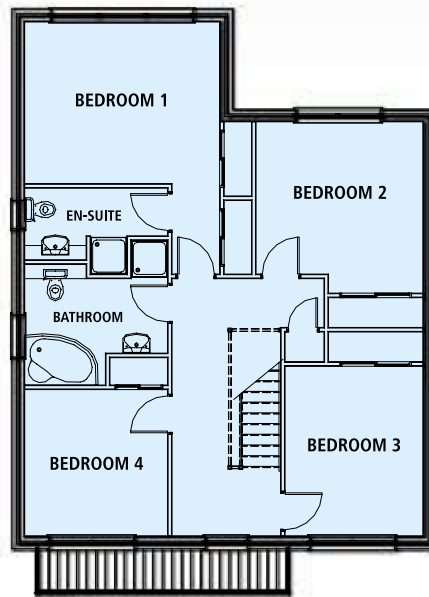
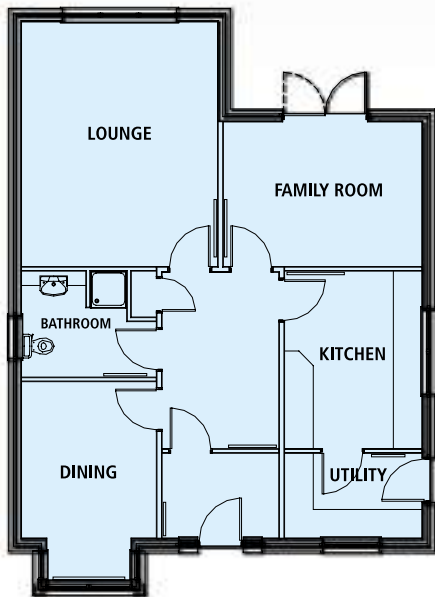




# O'NEIL

FLOOR PLAN - Total Internal Area - 163m<sup>2</sup> 1754ft<sup>2</sup>



Lounge	4.1m x 5.7m	(13ft 5ins x 18ft 8 ins)
Family	4.1m x 5.7m	(13ft 5ins x 18ft 8 ins)
Utility	1.8m x 2.5m	(5ft 11 ins x 8ft 2 ins)
Kitchen	2.9m x 3.7m	(9ft 6 ins x 12ft 2 ins)
Dining	2.8m x 3.6m	(9ft 2 ins x 11ft 10 ins)
Toilet	2.8m x 1.9m	(9ft 2 ins x 6ft 3 ins)

Bedroom 1	4.1m x 3.4m	(13ft 5 ins x 11ft 2 ins)
Bedroom 2	3.8m x 4.4m	(12ft 6 ins x 14ft 5 ins)
Bedroom 3	3.5m x 3.4m	(11ft 6 ins x 11ft 2 ins)
Bedroom 4	3m x 3m	(9ft 10 ins x 9ft 10 ins)
Bathroom	3m x 2.5m	(9ft 10 ins x 8ft 2 ins)

Although every care has been taken in the preparation of these details, some variance may occur.